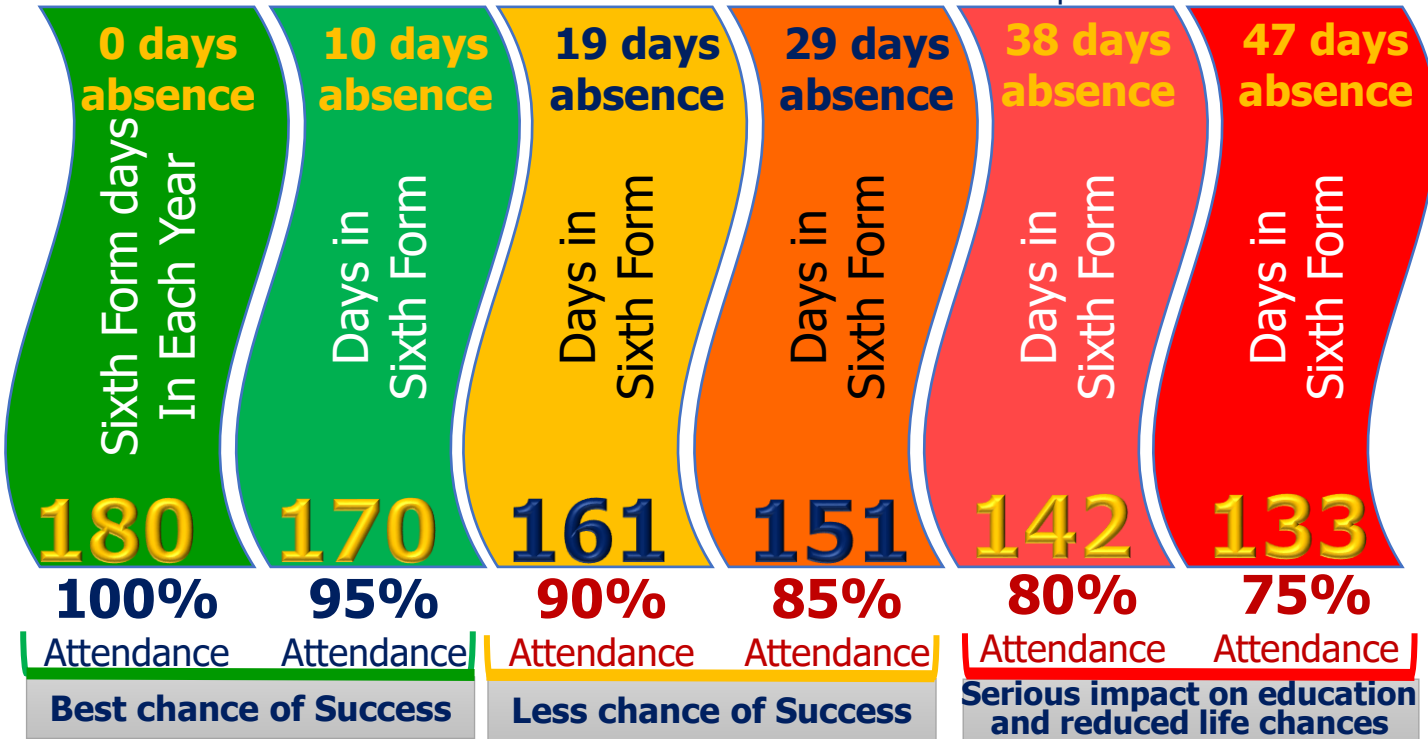


Attendance and Punctuality Counts

185 non-term days for personal commitments



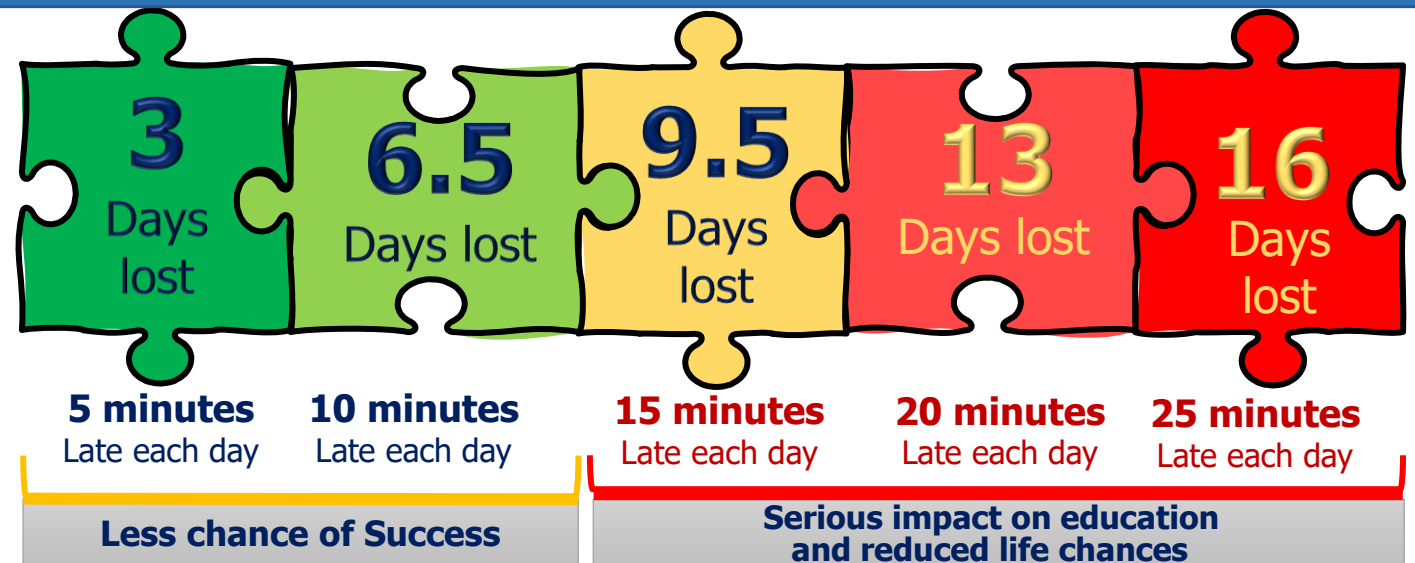
95% attendance means 10 days absence and 50 lessons lost where there are 5 lessons a day

90% attendance or less can reduce your chances of good outcomes by half

Medical Appointments When possible book them outside of Sixth Form hours.

Illness Unless it's serious, come into Sixth Form, it's best to come in and try then decide you need to go home.

Family Holidays You have 175 days a year where you're not in Sixth Form. A one-week holiday in term time means that the highest attendance you can get is 97%



Average learning hours per day is **5 hours**.

If you are 15 minutes late each day you will have missed **2 full weeks** of Sixth form in one year!