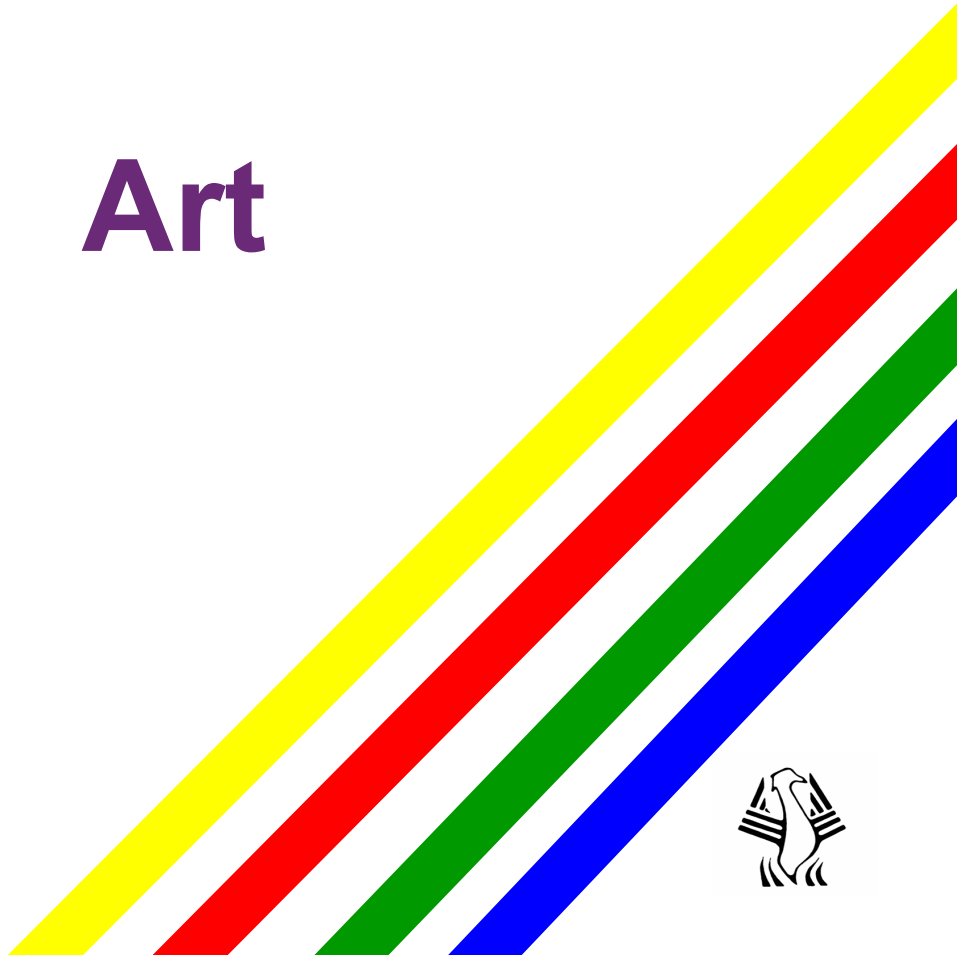




Aldercar High School

Post-16

Art



Subject Information

If you are interested in developing your creativity then Art and Design Btec Level 3 is the course for you. Art and Design features in every aspect of our life, from the films you watch to the trainers you wear and this course will help to give you a grounding in a range of techniques, processes and materials as well as introducing you to different ways of working and different artistic styles.



The 2 year Btec Extended Certificate consists of 4 units. 3 are mandatory and cover Art History, Art Practices and the Creative Process. The 4th is an optional unit and allows you to branch out into what could become your chosen pathway including; 3D design, Photography, Graphic Design, Fashion and Textiles

The course is a good introduction to many exciting careers from advertising to virtual reality design, animation to fashion photography. It will help you progress to higher education opportunities through a foundation course to a wide range of degree courses in a vast array of Art based subjects or maybe an apprenticeship or employment

To study this course it helps to have completed either Art and Design, Graphics/Product Design, Photography GCSE or Btec Art and Design level 2 in Year 11 but if you have an interest in Art and an ability to record thoughts/feelings or observations visually then you could still study with us.



Course Delivery

In Year 12 you will complete 2 units; Unit 1 Visual Recording and Communication and Unit 2 Critical and Contextual studies in Art and Design, both of these have an externally assessed written element.

In Unit 1 you will explore different ways of recording the visual information around you using some new methods and materials as well as exploring a range of existing practitioners before developing your own piece of work based on an externally set theme.

In Unit 2 you will research and compare a wide range of artists and art practitioners before producing a written critique of their work

Both of these units have the opportunity of “mock” units to ensure you are fully prepared for the official material

Towards the end of Year 12 you will begin Unit 3 The Creative Process looking at how Artists and Art Practitioners plan, research and develop their work from initial idea to finished product

In Year 13 you will complete Unit 3 before selecting one of the following optional units to take you to the end of the course

Photography

Graphics

Interactive Design

Fine Art

3D Design

Textiles

Fashion

3D Crafts



Explore BTEC Nationals



Art and Design – course overview

The chart below gives you an overview of the course sizes available in your BTEC Level 3 Nationals Art and Design **Applied General** qualifications.

These Applied General-style qualifications provide your learners with the underpinning knowledge and skills they will need to succeed in the creative sector and offer your learners:

- flexibility to progress to larger size qualifications or specialise
- opportunities to showcase their skills through **practical assessments**.

Applied General

Certificate 180 GLH	Extended Certificate 360 GLH	Foundation Diploma 510 GLH	Diploma 720 GLH	Extended Diploma 1080 GLH
Same size as 0.5 A level Applied General	Same size as 1 A level Applied General	Same size as 1.5 A levels Applied General	Same size as 2 A levels Applied General	Same size as 3 A levels Applied General
Total units: 2 1 Mandatory Unit PLUS 1 Optional Unit*	Total units: 4 3 Mandatory Units PLUS 1 Optional Unit*	Total units: 6 4 Mandatory Units PLUS 2 Optional Units*	Total units: 8 6 Mandatory Units PLUS 2 Optional Units*	Total units: 13 7 Mandatory Units PLUS 6 Optional Units*
Purpose: Provides a basic introduction to studying art and design.	Purpose: Provides a broad basis for studying the art and design sector.	Purpose: Designed as a one-year course – underpinning knowledge for the art and design sector.	Purpose: In-depth study for learners studying art and design alongside other qualifications.	Purpose: A two-year, full-time course-in-depth study of the art and design sector.
When studied alongside other level 3 qualifications supports progression to:	Supports progression to:	Supports progression to:	Supports progression to:	Supports progression to:
<ul style="list-style-type: none"> Further education or higher education Employment 	<ul style="list-style-type: none"> Higher education or training Employment 	<ul style="list-style-type: none"> An Apprenticeship or entry level employment in the sector 	<ul style="list-style-type: none"> Higher education Employment 	<ul style="list-style-type: none"> Higher education Employment

Included in performance measures in England – see website for full details

*please see specification for details of all Optional Units available. Information correct at time of publication – please see specification for latest information.

The skills to succeed – the confidence to progress

Assessing BTEC Nationals

Assessment and Grading

Types of assessment

Your BTEC Level 3 Nationals Art and Design qualifications take a unit-by-unit approach and offer a combination of assessment styles.

This gives your learners the opportunity to showcase their skills and apply their knowledge in an appropriate, work-related context, and provides evidence of what they can do when they apply to enter higher education or employment.

Assignments (internally assessed)

Set and marked by: Centre
Verified by: Pearson

Assignments are practical tasks set in work-related scenarios that can be tailored to local industry needs for your learners. Learners demonstrate how they apply knowledge and skills to complete a practical project over a period of time, working individually or in groups.

Tasks (externally assessed)

Set and marked by: Pearson

Tasks are practical work-related scenarios completed in realistic, time-based situations. They are completed in controlled conditions and some tasks have pre-released information. Learners demonstrate how to apply learning to common workplace or HE scenarios. Tasks provide evidence of a consistent standard of assessment for all BTEC learners.

Grading

A learner's final qualification grade reflects their achievements across units in their BTEC Nationals course.

Both internally and externally assessed units are individually graded, and each final unit grade is allocated points.

Internally assessed units are marked and graded in the Centre (school, college or training provider) and subject to external verification by Pearson.

Externally assessed units are marked and graded by Pearson.

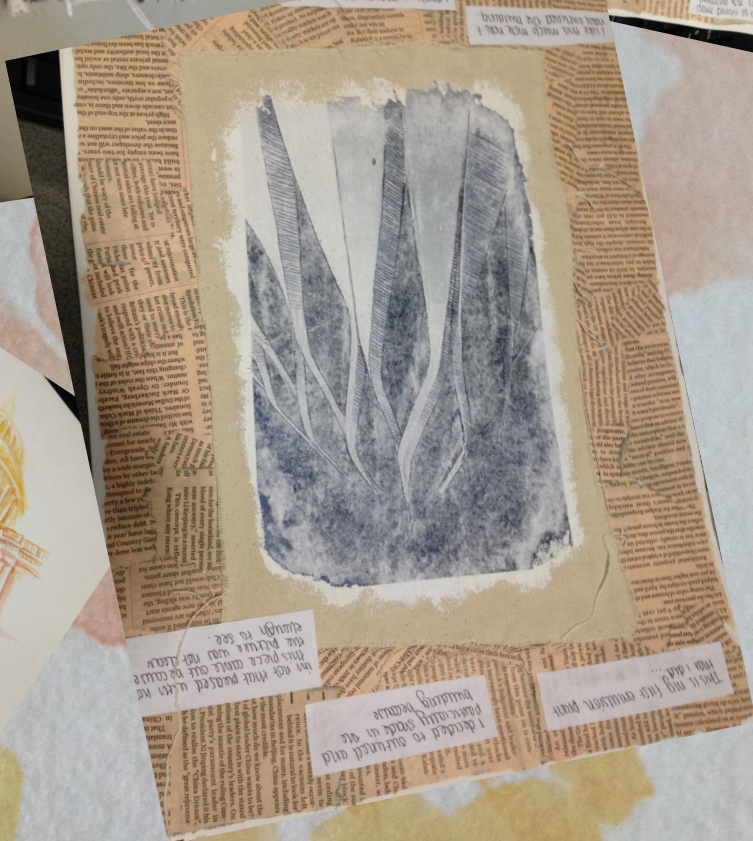
Units are graded Pass, Merit or Distinction, with external units also having a N grade in most Level 3 sectors. Total points scored across all units are used to calculate the final qualification grade.

	GLH	Type (Int/Ext)	Grade	Unit points
Unit 1	90	Int	Distinction	24
Unit 2	90	Ext	Merit	22
Totals	180		D	46

Achievement of a Certificate with a D grade example

Download your specification at quals.pearson.com/BTECNatsArt16Guide





but not that pleased with the picture and not drawn enough to see.

I decided to surround and partially shade in the building because

This is my revision part

one has to be able to draw

Rich in history it is a beautiful site that would be well served by a light and airy design of the park

... but of the second aspect that "open space"

on "interior" spaces one called "practical"

Upgrade the main area is a good idea. It is a good idea to have a large area of open space.

How does one "create" a building? It is a good idea to have a large area of open space.

**For further information contact
Mr Goddard or Mrs Walford**



Aldercar High School
Daltons Close, Langley Mill, Nottingham NG16 4HL
Tel 01773 712477
E-mail info@aldercarhigh.co.uk